

Gulet Queen of Adriatic

Gulet Queen of Adriatic or Adriatic queen, completely new gulet, finished in July 2008. It is one of the top gulets in Croatia when it comes to luxury. As a winning combination of luxury and leisure it has received best proof as a great choice.

Departure ports: Šibenik, Primošten, Trogir, Dubrovnik.

PRICE LIST (2016)

Period:	30.04. - 25.06. 10.09. - 29.10.	25.06. - 23.07. 27.08. - 10.09.	23.07. - 13.08.	13.08. - 27.08.
Price (€):	11.900	13.900	17.900	16.800

INCLUDED IN THE PRICE:

- 7 days cruise,
- 4h cruising per day,
- half board (breakfast+one meal),
- all drinks (fine wine, soft drinks, spirits, tea, coffee...)
- 2xdaily massages (1h full body for 2 persons, or ½ for 4 persons),
- 2xwine tastings on bord,
- 2xwine tastings onshore,
- 4 crew members(including their wages and food),
- fuel for water sports (water ski, wakeboard, water tube),
- final cleaning,
- fuel for 6 hours for generator per day,
- bed sheets and towels,
- VAT included in price,
- residence tax.

EXCLUDED:

- additional generator use hour 25 EUR,
- entrances fees to national parks,
- port fees* 300 EUR-100 EUR,
- *during the cruise, the gulet will not dock in the ports. Passangers will be transferred to the boat by the speedboat. If the harbour availability allows it, docking directly in the port is possible with extra fee.
- special taxes to marinas to meet the client's demand,
- special transfers,
- extra meal on bord 25 EUR per person,
- daily more than 4 hrs cruising (75 eur per hour),
- crew tips,
- additional massages on bord 50 EUR (1h), 25 EUR (1/2h).





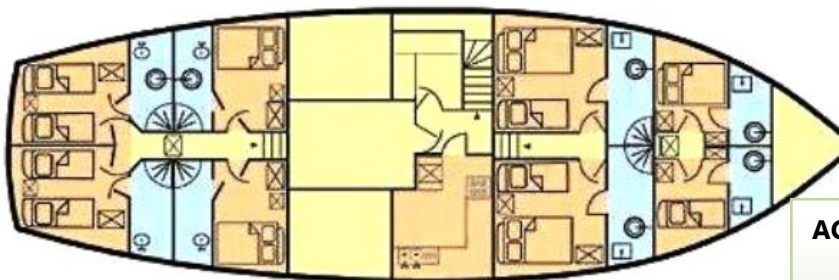
FOOD AND DRINK OPTIONS:

- Half board 300 EUR/person/week (obligate)
- Full board 400 EUR/person/week
- All inclusive domestic drinks 150 Eur/person/week

Beverages on the yacht bar only!

EXTRA COST:

- One way extra charge for route: Šibenik – Dubrovnik 1000 €.
- For route to Montenegro additional foreign tax approx. 300 € (in cash).
- Additional crew like hostess on request cost 120,00 € /day.



ACCOMMODATION:

- 4 double bed cabins
- 2 twin bed cabins

[Gulet Queen of Adriatic - photos](#)

PAYMENT CONDITIONS:

- 50% ADVANCE payment - upon reservation.
- 50% BALANCE payment - 5 weeks before charter period.

CHECK-IN: Saturday - 16:00 h

CHECK-OUT: Saturday - 09:00 h

